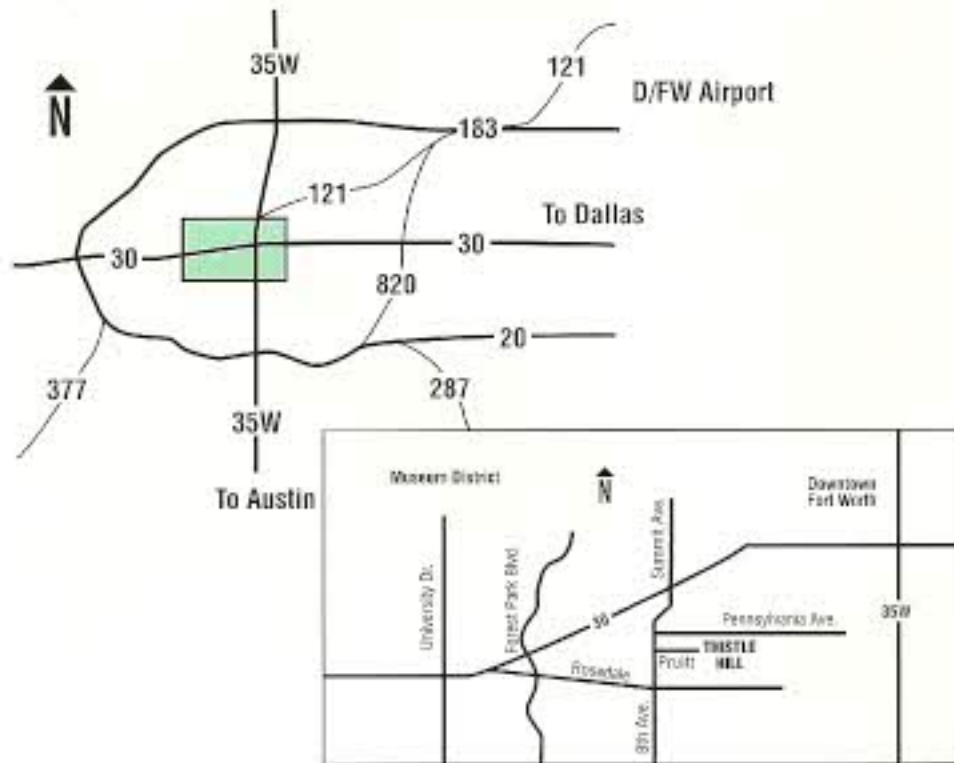
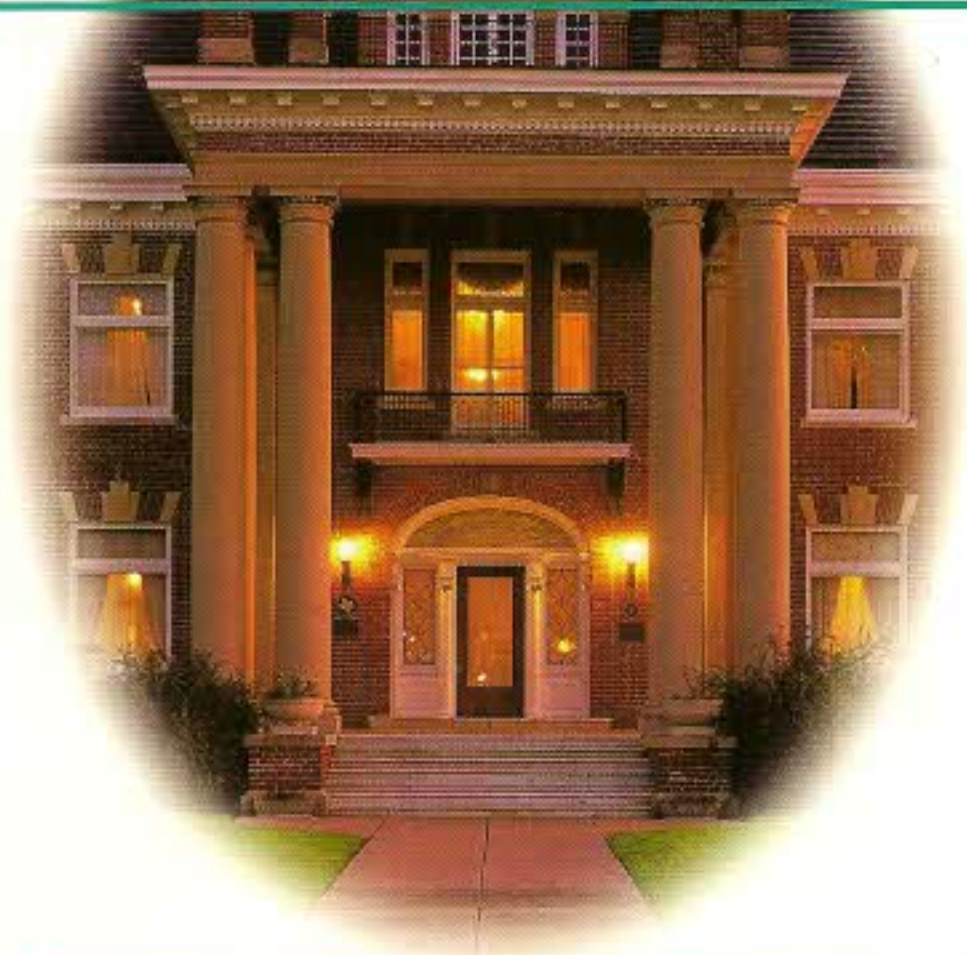


# THISTLE HILL

1509 PENNSYLVANIA AVENUE  
FORT WORTH, TEXAS 76104  
(817) 336-1212  
FAX (817) 335-5338



# THISTLE HILL



Call (817) 336-1212 for information about guided tours,  
group rates or rental information for corporate events,  
weddings or receptions.

You may also visit our website at [www.ThistleHill.org](http://www.ThistleHill.org).

*Thistle Hill is listed on the National Register of Historic Places  
and with the Texas Historical Commission.*

*"One of the few remaining examples of Georgian Revival architecture  
in the Southwest." - National Register of Historic Places.*



1509 PENNSYLVANIA AVENUE  
FORT WORTH, TEXAS 76104  
(817) 336-1212

# THISTLE HILL

*TOUR THE RICHLY APPOINTED  
AND CAREFULLY RESTORED ROOMS  
OF ONE OF THE SOUTHWEST'S  
BEST PRESERVED GEORGIAN  
REVIVAL MANSIONS.*

Thistle Hill, built in 1903, is as important for its architecture as for its association with two prominent Texas families - A.B. & Electra Waggoner Wharton and Mr. & Mrs. Winfield Scott. On the guided tour you will hear family anecdotes and local history with information about the house and furnishings.



Imagine the grand entrance made down this 14' wide oak staircase. Elaborate stenciling has been meticulously restored in the plaster cove.



Second owner, Mrs. Winfield Scott, decorated the parlor in the trendy colors and window treatment of the era.

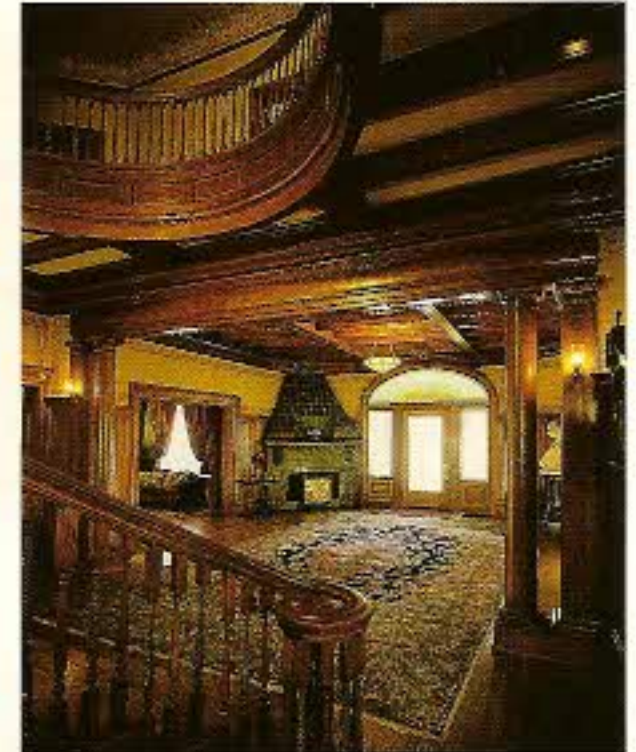
Bird's eye maple, original light fixture and coal burning fireplace are featured in this guest bedroom.



Unique carom billiard table and gorgeous oak wainscoting set the stage for popular game and card parties at the turn of the century.



The Tiffany-style lamp was one of Mrs. Scott's treasures. The library features faux leather wall covering and elaborate stenciling in the plaster cove.



The massive foyer served as an impressive entrance to the home. Oriental rugs are on display throughout the rooms.



Well known for lavish entertaining, the dining room was the setting for elegant parties hosted by both the Whartons and the Scotts. Haviland and Limoges china was collected by both owners.